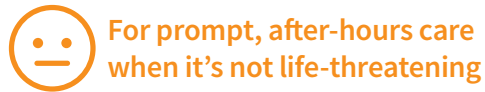
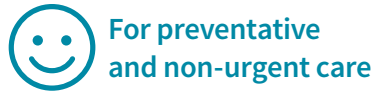


# Where should I go for care?



## Primary Care Doctor

Appointment: Yes  
Hours: Business

## Stanford Express Care

Appointment: Yes, same-day  
Hours: Daily, 9:00am–9:00pm

## Stanford Walk-In Clinic

Appointment: No  
Hours: Monday–Friday,  
3:30pm–11:00pm  
*Adults and pediatric patients  
older than 6 months welcomed!*

## Urgent Care

Appointment: No  
Hours: Varies by provider

## Emergency Room

Appointment: No  
Hours: 24/7

Annual exams • Blood tests •  
Care for chronic illness • Flu  
shots • Routine care

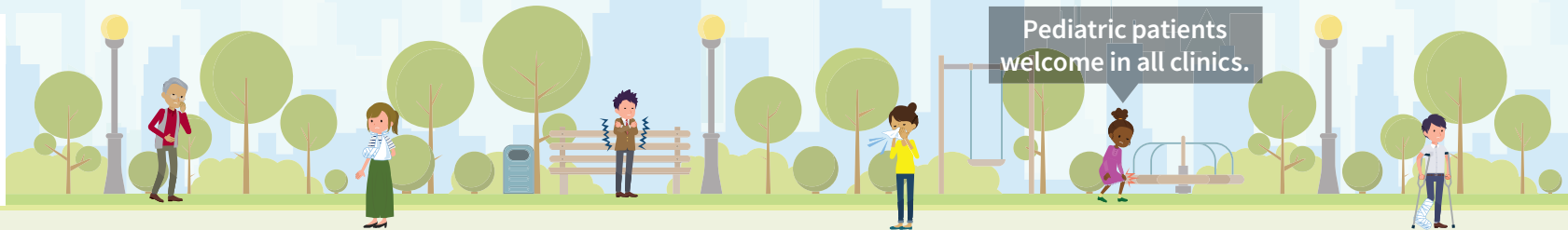
Minor ailments including cold, flu, cough, sore throats, headaches, fever, ear infections, congestion  
and rashes • Minor injuries including sprains, cuts, puncture wounds, burns, animal and insect bites •  
Vomiting/diarrhea/hydration • Back pain • Abdominal pain • Mild asthma

Call 911 or go to the nearest  
hospital for life-threatening  
emergencies

MY DOCTOR'S NAME

PHONE NUMBER

Pediatric patients  
welcome in all clinics.





**Stanford**  
HEALTH CARE ALLIANCE

1221 Broadway, 3rd Floor  
Oakland, CA 94612

**When you are unable to see your primary care doctor,  
but it's not serious enough for the emergency room:**

**Stanford Express Care**

**Palo Alto**

211 Quarry Rd, Ste 102

Palo Alto, CA 94304

tel: 650.736.5211

Hours: Daily, 9:00am–9:00pm

**Stanford Walk-In Clinic**

211 Quarry Rd, Ste 402 (4th Fl)

Palo Alto, CA 94304

tel: 650.497.3940

Hours: Mon–Fri, 3:30pm–11:00pm

*Adults and pediatric patients older than 6 months welcomed!*

**Stanford Express Care**

**San Jose**

52 Skytop St, Ste 10

San Jose, CA 95134

tel: 669.294.8888

Hours: Daily, 9:00am–9:00pm

**Stanford Health Care – Valley Care, Urgent Care**

1133 E Stanley Blvd

Livermore, CA 94550

tel: 925.373.4018

Hours: Daily, 10:00am–8:00pm

Holiday Hours: 10:00am–3:00pm

*On July 4th, Thanksgiving and Christmas*

4000 Dublin Blvd, Ste 150

Dublin, CA 94568

tel: 925.479.3773

More in-network urgent care centers and clinics are available. For a complete listing,  
please contact Member Care Services at **1.855.345.7422**. Or visit your provider directory ►

